



iLoupe



- World's first compact portable field microscope, available any-time & anywhere
- 2 in 1 device. Standard Digital Camera & and a High Power Microscope
- Built in Adjustable LED Lighting
- High Resolution 6 mega-pixel Canon Camera
- 10x, 20x and 30x objective lenses available giving a magnification range of 10x to 150x
- Cost Effective Offering with Powerful Functions

The first compact portable field microscope utilizes a digital camera with a patented module with built in LED lighting and specially designed lenses. The iLoupe can clearly capture objects from 6mm to 10 microns. This 2 in 1 device allows you to quickly interchange between a standard digital camera and a microscope. You can now carry a portable field microscope and a digital camera in your pocket with ease. Three objective lenses are available to meet a variety of different applications. Using the optical and digital zoom range of the camera the following magnification ranges are produced:-

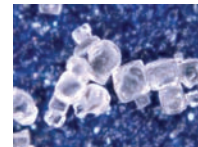
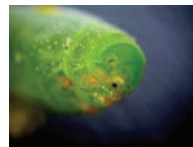
With the 10x objective lens: 10x to 60x
With the 20x objective lens: 20x to 100x
With the 30x objective lens: 30x to 150x

The iLoupe is available in Starter Pack and Pro Pack Versions. The iLoupe Starter Pack includes the Cannon SD600 6 Mega Pixel Camera with the Adapter Ring, Module with LED Lighting and a 60x Objective Lens. The iLoupe ProPack includes the Cannon SD600 6 Mega Pixel Camera with the Adapter Ring, Module with LED Lighting and three objective lenses (60x 100x and the 150x.)

Optional Stand and Carrying Case are also available.

Applications:-

- QC Inspection
- Medical
- Archaeology
- Research
- Forensics
- Forestry and Much More



Aven Inc.
4595 Platt Road
Ann Arbor, MI 48108
Tel: 734-973-0099
Fax: 734-973-0097



Specifications

	<i>iLoupe Starter Pack</i>	<i>iLoupe Pro Pack</i>
Objective Lenses included	10x	10x, 20x, and 30x
Magnification Range	10x –60x	10x-150x
Field of View	10x: 16 x 12mm, 20xx: 9 x 6.5mm, 30xx: 5.7 x 4.5mm	
Lens Design	Schott No-Lead Optical Grade Glass	
Coating	Multi-Layer Anti-Reflective Coating	
Built in Dimmable Illumination	4 White LED Lights	
Batteries	Two Li-ion Rechargeable Batteries Included	
Order #	26700-501S	26700-501P

Optional Accessories

<i>Order #</i>	<i>Description</i>
26700-505	Stand for iLoupe
26700-506	Carrying Case for iLoupe



iLoupe Stand



iLoupe Carrying Case

Aven Inc
 4595 Platt Road
 Ann Arbor, MI 48108
 Tel: 734-973-0099 Fax: 734-973-0097



iLoupe Images

